

LUBODIE BASIC

Progegroup s.r.l.

20261224

DieTronic
lubrication systems

Thank you for choosing DieTronic!

The purpose of this manual is to show you the various parts of which your machine is composed with the aim of improving your experience of spare parts ordering.

In order to achieve this goal, this manual have been designed according to the same logical structure your machine has been built and managed. This will lead you to a less stressful research of the parts you are looking for and to establish a better communication with our Spare Parts team for your final satisfaction.

Let's see how it works.

The very first drawing that you will find is showing the complete machine and, in the same drawing, you can see the sections it has been splitted in (highlighted). Every single section has a part number assigned, and this part number is your reference to another drawing of the manual, which is showing you that particular section and the parts in which it has been divided. Following the same logic, you will find another drawing that will finally show the single parts the section is composed of and the related part numbers that you can use to order spares.

In the tables where you can read the part numbers, there is a suggestion for special parts to be kept as stock spares (**A** for critical parts with long lead time, **B** for important parts with normal lead time/normally in stock at our warehouse and **C** for wear parts). Take a look at the picture on the right for a better understanding.

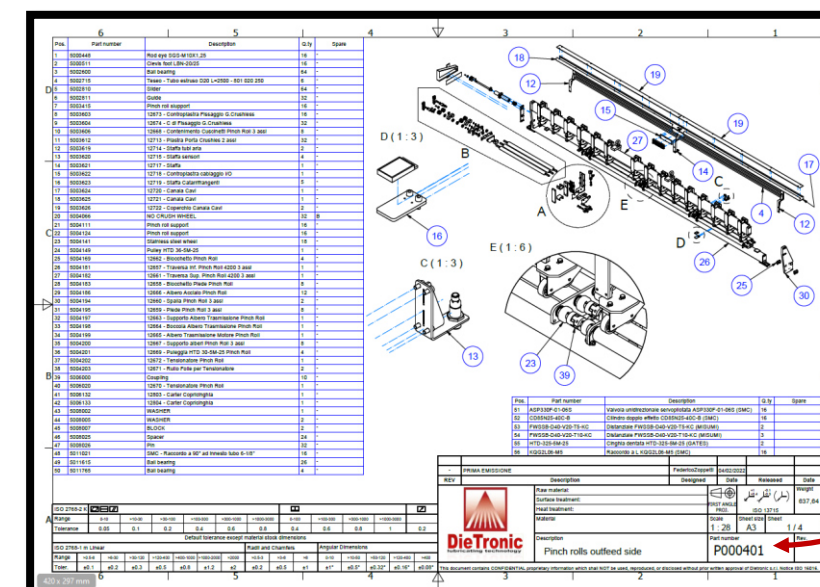
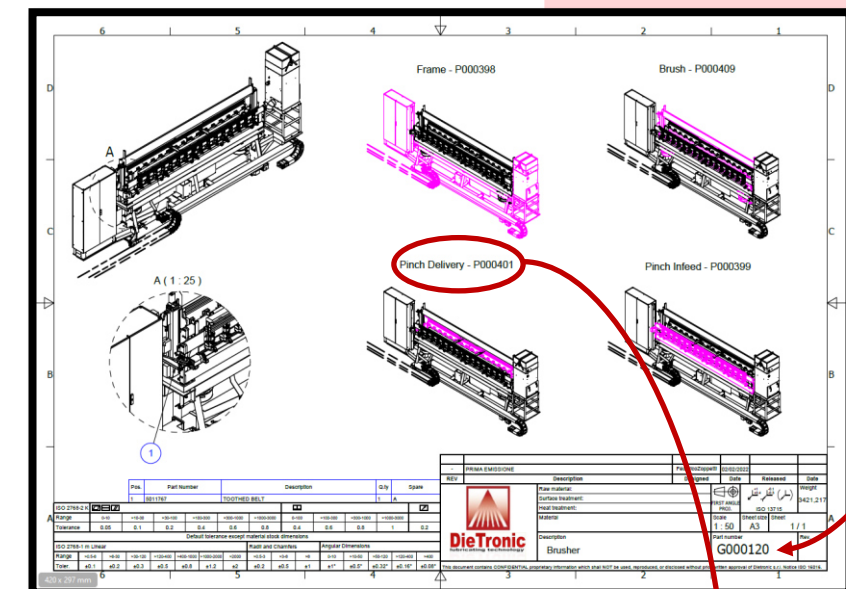
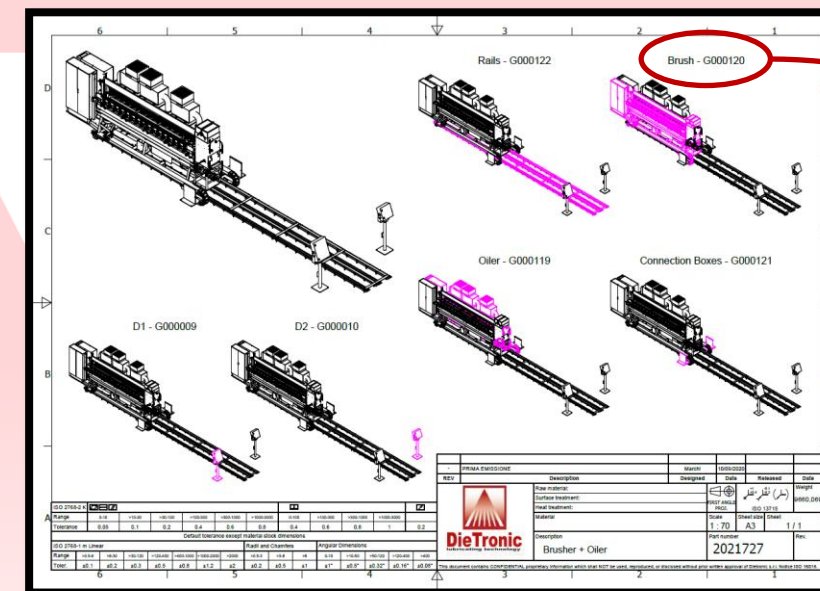
We are grateful for having been chosen as your preferred partner.

Please feel free to contact our Spare Parts team for any of your needs via:

Email: sales@dietronic.eu

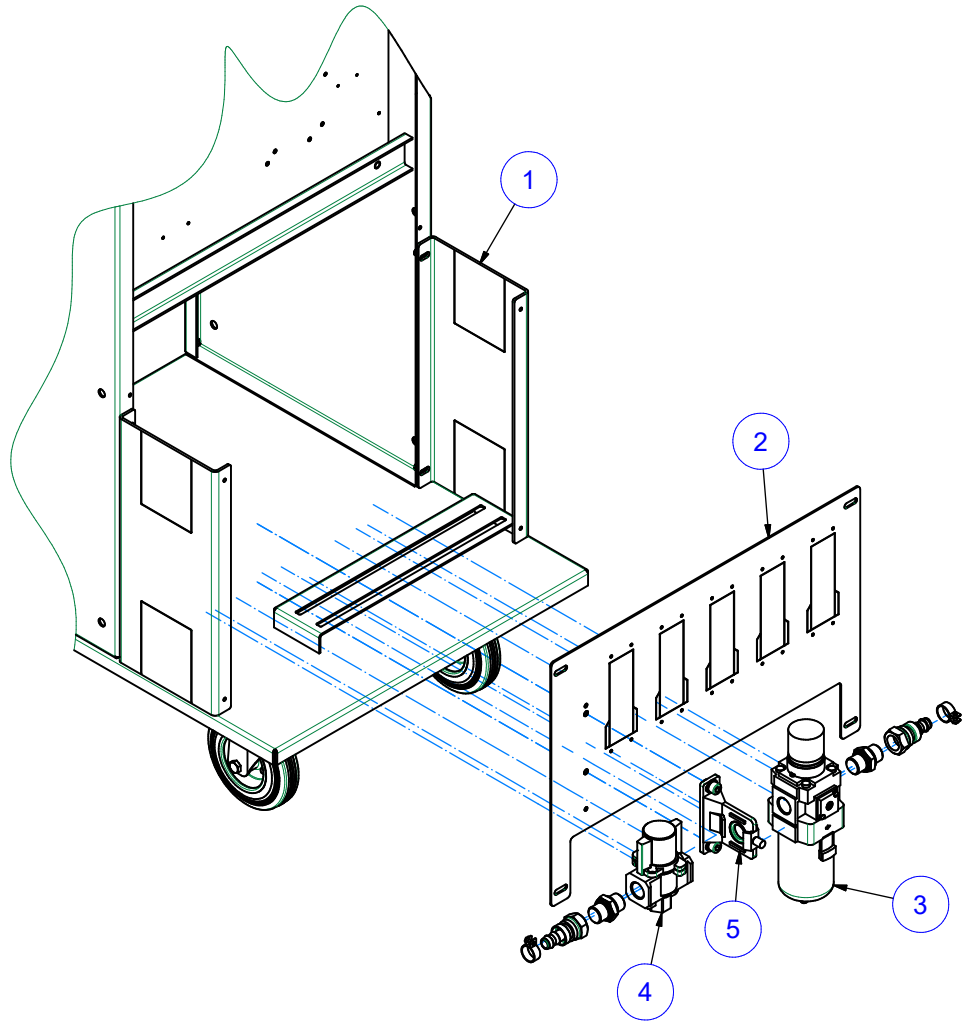
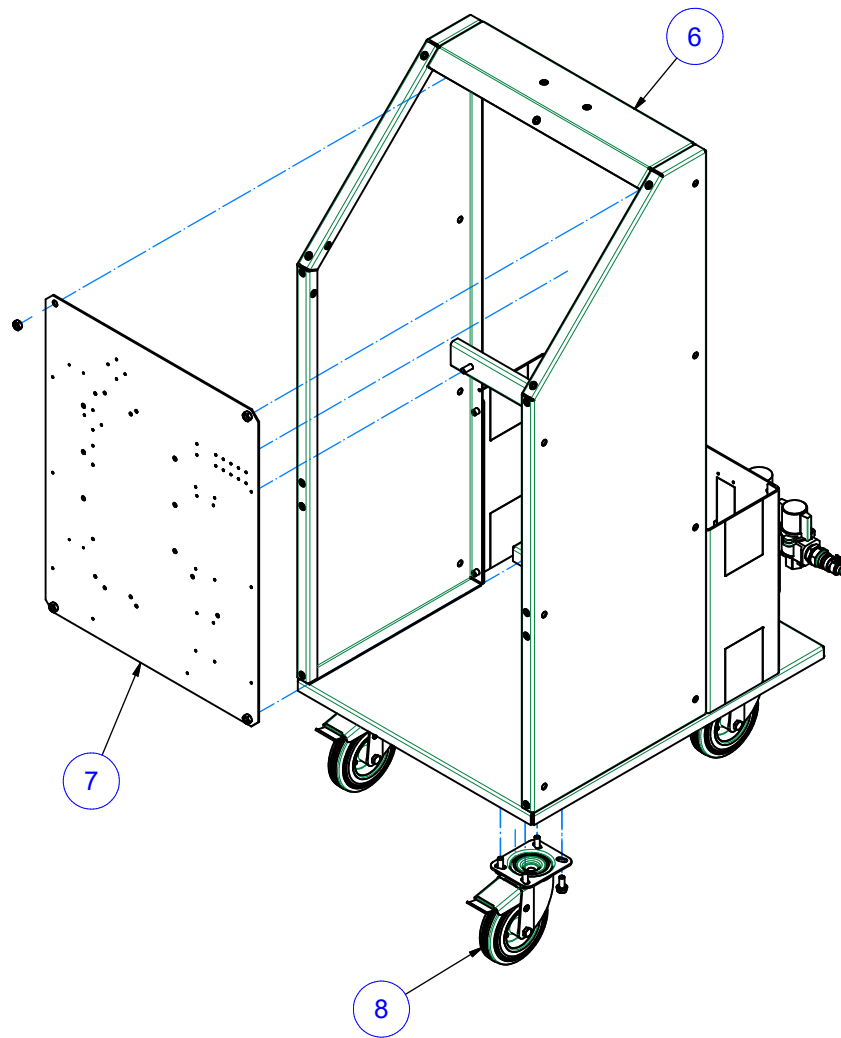
Phone: (+39) 0371210129

Welcome to the DieTronic family!


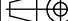



DieTronic

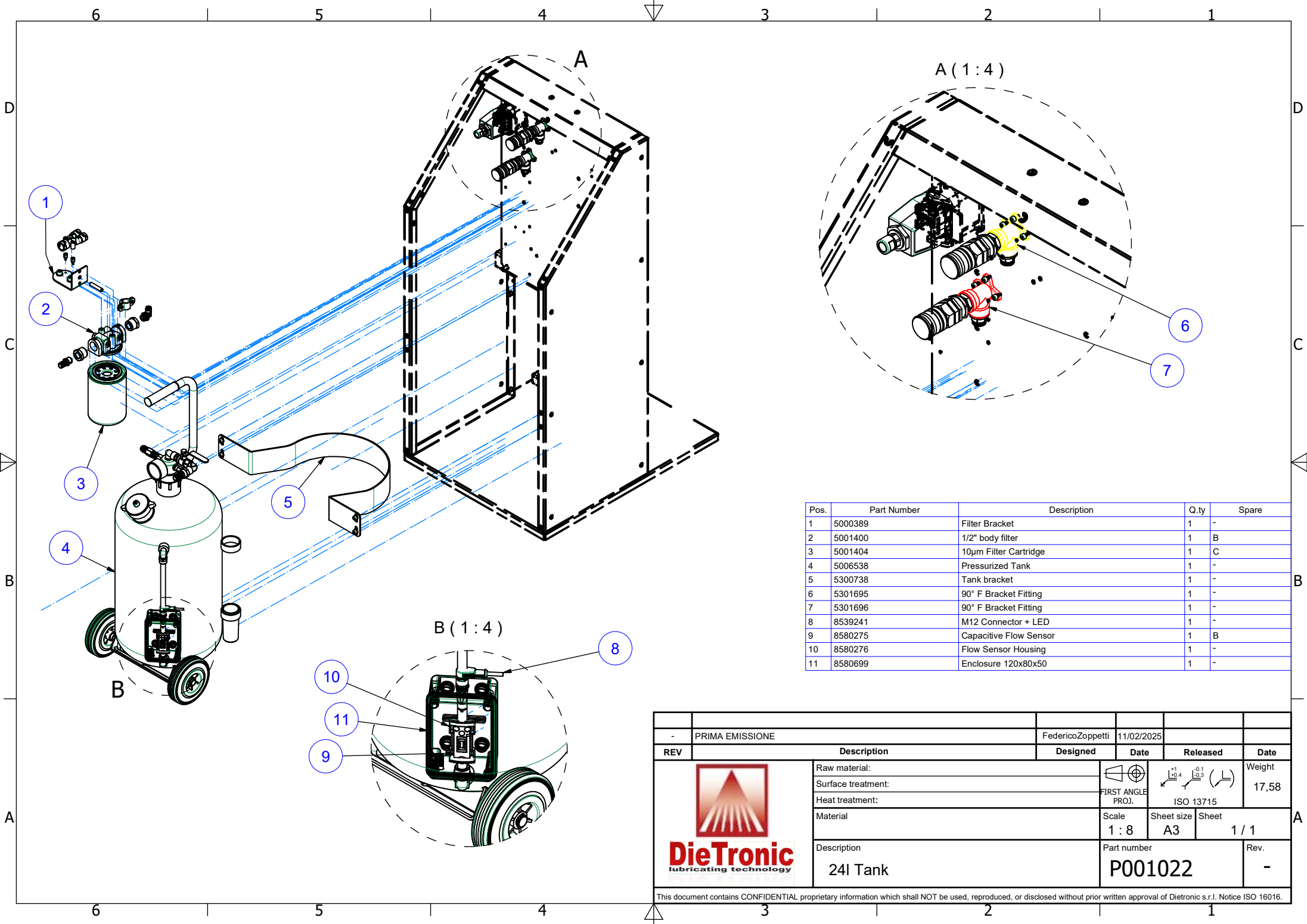
lubrication systems



Pos.	Part Number	Description	Q.ty	Spare
1	5000336	E-Cabinet Bracket	2	-
2	5000339	Plate for Connectors	1	-
3	5001122	Air Filter	1	B
4	5001123	Manual control valve, 3/2 ways, 1/2 "	1	B
5	5001124	Air Filter Bracket	1	-
6	5003344	Oil Tank Frame	1	-
7	5003348	Assembly Plate	1	-
8	5011662	Wheel with Brake Ø125	4	-

-	PRIMA EMISSIONE		FedericoZoppetti	11/02/2025			
REV	Description		Designed	Date	Released	Date	
 DieTronic lubricating technology	Raw material:		 FIRST ANGLE PROJ.		 ISO 13715		Weight
	Surface treatment:						41,58
	Heat treatment:						
	Material		Scale	Sheet size	Sheet		
			1 : 8	A3	1 / 1		
Description		Part number			Rev.		
Tank Structure		P001020			-		
This document contains CONFIDENTIAL proprietary information which shall NOT be used, reproduced, or disclosed without prior written approval of Dietronic s.r.l. Notice ISO 16016.							

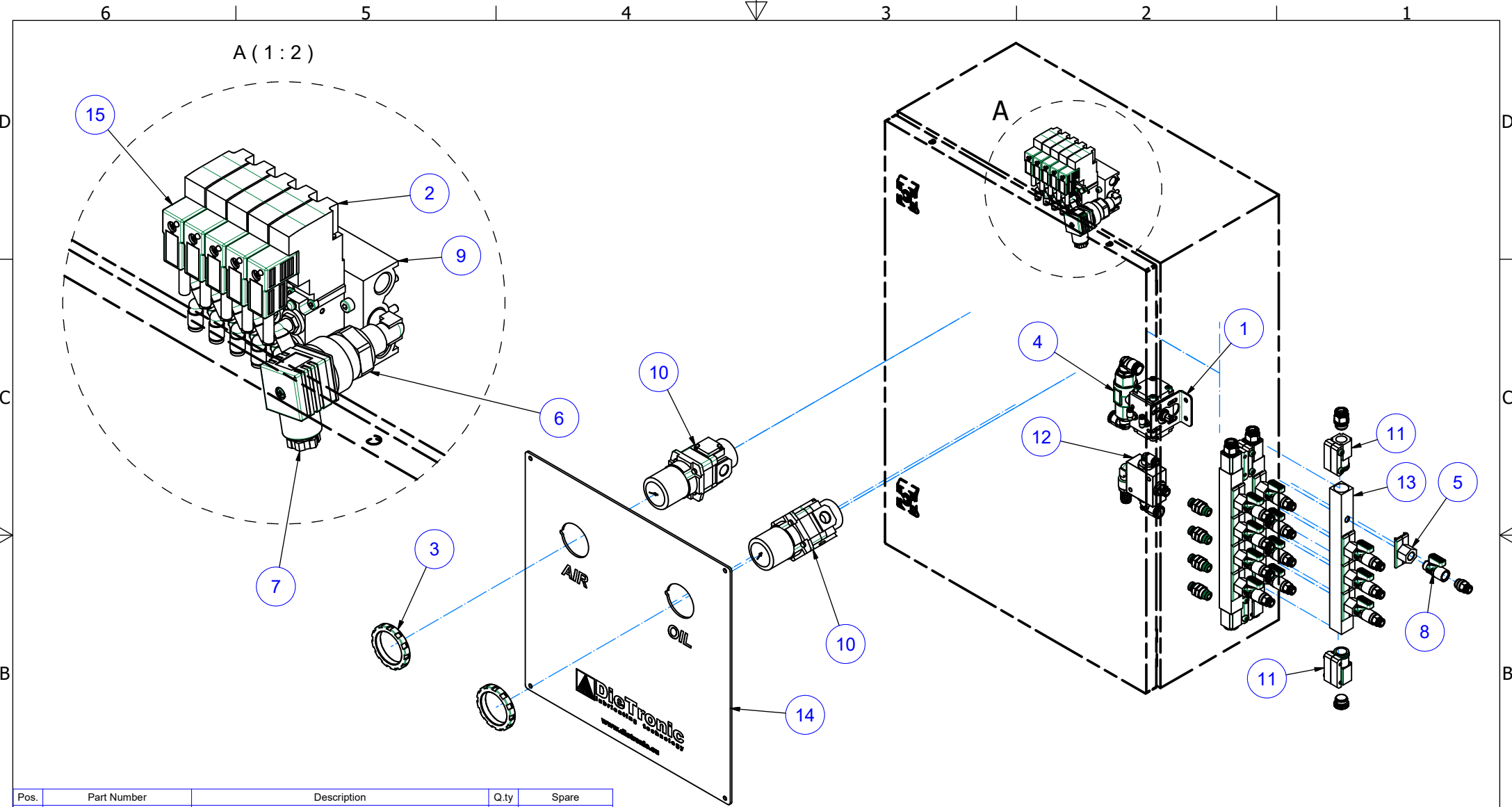





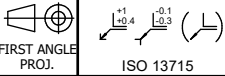
Pos.	Part Number	Description	Q.ty	Spare
1	5000389	Filter Bracket	1	-
2	5001400	1/2" body filter	1	B
3	5001404	10µm Filter Cartridge	1	C
4	5006538	Pressurized Tank	1	-
5	5300738	Tank bracket	1	-
6	5301695	90° F Bracket Fitting	1	-
7	5301696	90° F Bracket Fitting	1	-
8	8539241	M12 Connector + LED	1	-
9	8580275	Capacitive Flow Sensor	1	B
10	8580276	Flow Sensor Housing	1	-
11	8580699	Enclosure 120x80x50	1	-

-	PRIMA EMISSIONE	Federico Zoppetti	11/02/2025		
REV	Description	Designed	Date	Released	Date
	Raw material:				Weight
	Surface treatment:				17,58
	Heat treatment:				
	Material	Scale	Sheet size	Sheet	
		1 : 8	A3	1 / 1	
	Description	Part number	Rev.		
	24I Tank	P001022	-		

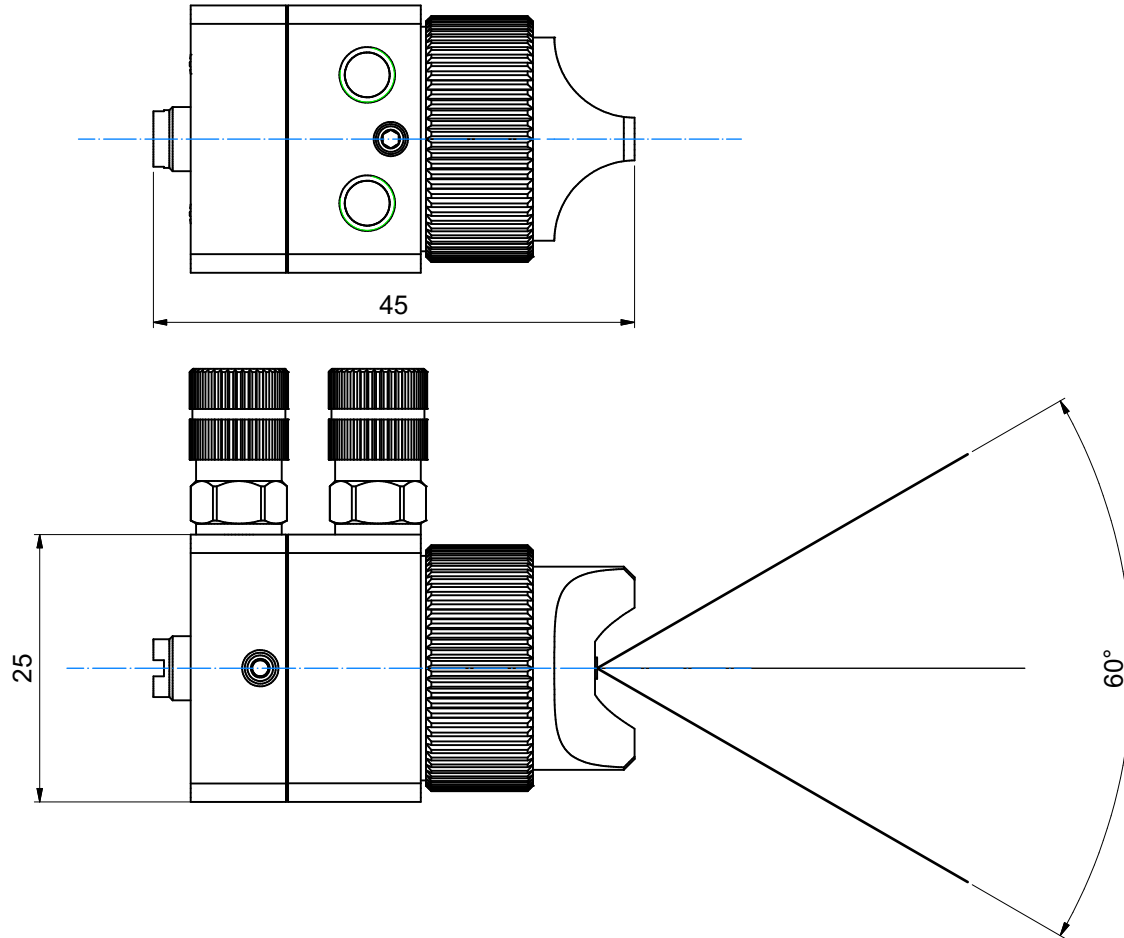
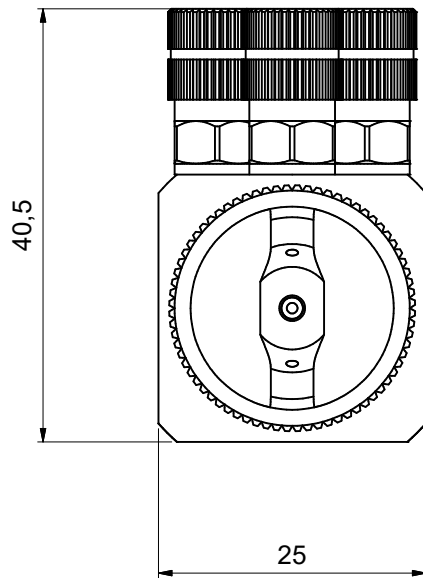
This document contains CONFIDENTIAL proprietary information which shall NOT be used, reproduced, or disclosed without prior written approval of Dietronic s.r.l. Notice ISO 16016.



Pos.	Part Number	Description	Q.ty	Spare
1	5000352	Omal bracket	1	-
2	5001102	Monostable Solenoid Valve 5/2	5	B
3	5001108	Ring	2	-
4	5001522	2-way ball valve	1	-
5	5002714	Outlet plate D20 1/4" BSP female	12	-
6	5006553	pressure switch 0-12 bar G1/4	1	-
7	5006554	Pressure switch connector	1	-
8	5006596	Tap M 1/4" - F 1/4"	12	-
9	5011033	5-station manifold, G1/4" G1/8"	1	-
10	5011089	Integrated Manual Regulator	2	-
11	5011565	Threaded Female End 3/8"	6	-
12	5011598	aluminum cross fitting	1	-
13	5301136	Anodized extruded tube D20 L=230mm with holes	3	-
14	5301708	Control Panel	1	-
15	8539243	C-Shape Connector	5	-

PRIMA EMISSIONE		Federico Zoppetti	12/02/2025		
REV	Description	Designed	Date	Released	Date
		Raw material:			Weight
		Surface treatment:			7,45
		Heat treatment:			
		Material	Scale 1 : 5	Sheet size A3	Sheet 1 / 1
Description Cabinet			Part number P001023		Rev. -

This document contains CONFIDENTIAL proprietary information which shall NOT be used, reproduced, or disclosed without prior written approval of DieTronic s.r.l. Notice ISO 16016.



-	PRIMA EMISSIONE		Federico Zoppetti	22/11/2021		
REV	Description		Designed	Date	Released	Date
 	Raw material: -		 FIRST ANGLE PROJ.	 ISO 13715	 Weight	
	Surface treatment: -					0,14
	Heat treatment: -					
	Material		Scale	Sheet size	Sheet	
	-		2:1	A3	1 / 1	
	Description		Part number		Rev.	
KA21001 - AUTOMATIC spray valve model KA-2, aircap 60°		5000900		-		
This document contains CONFIDENTIAL proprietary information which shall NOT be used, reproduced, or disclosed without prior written approval of Dietronic s.r.l. Notice ISO 16016.						

This document contains CONFIDENTIAL proprietary information which shall NOT be used, reproduced, or disclosed without prior written approval of Dietronic s.r.l. Notice ISO 16016.



DieTronic

LubricACTION